

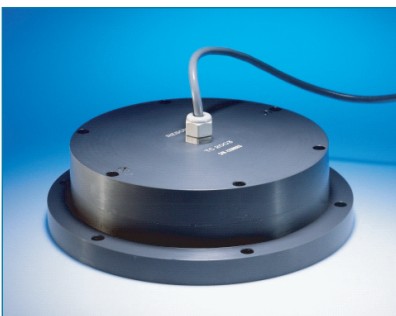
- Narrow conical beam
- High power input
- Low weight

TC2010

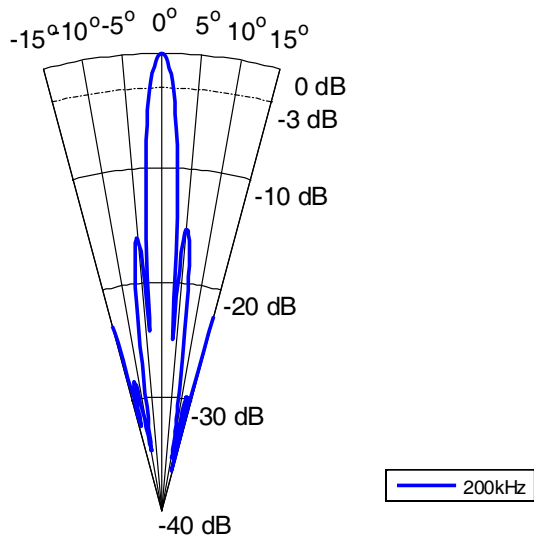
Narrow beam transducer for precise bottom recognition Ideal for all echo sounders working in the frequency band from 190–210kHz.

TECHNICAL SPECIFICATIONS

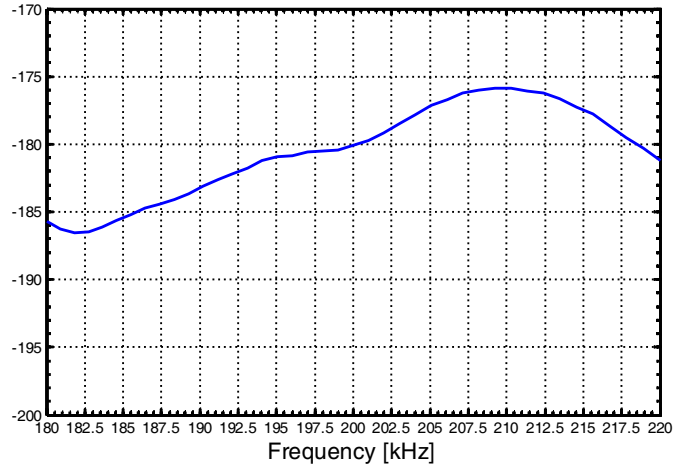
Resonant Frequency:	200kHz ±10kHz
Transmitting Sensitivity:	180dB ±3dB at 200kHz (dB re µPa/V @ 1m)
Receiving Sensitivity:	-180 dB ±3dB at 200kHz (dB re V/µPa)
Impedance:	100ohm ±30ohm
Beam width:	3.0° ± 0.2, Conical
Max input power:	1500W at 1% duty power
Operating depth:	30m
Survival depth:	50m
Operating temperature range:	-2°C to +30°C
Storage temperature range:	-30°C to +50°C
Weight with cable:	7.1kg
Cable:	18m FALMAT Type FM091003-1602A, 2x1 (Twisted pair) PUR Jacket, WATER BLOCK 2*1 (O.D. 9.3mm) - pigtail



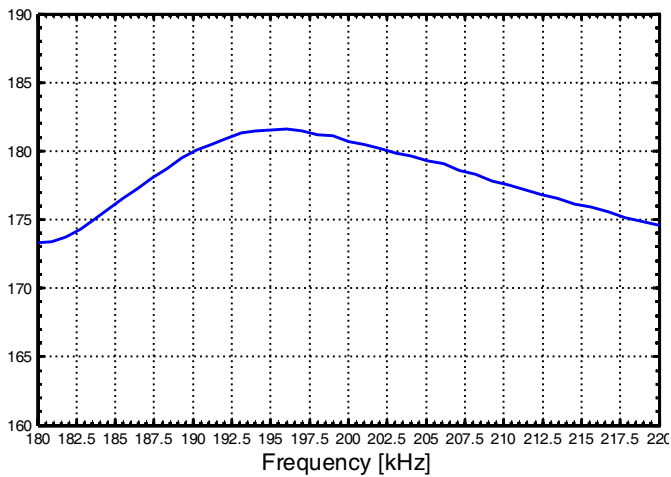
Horizontal Directivity Pattern



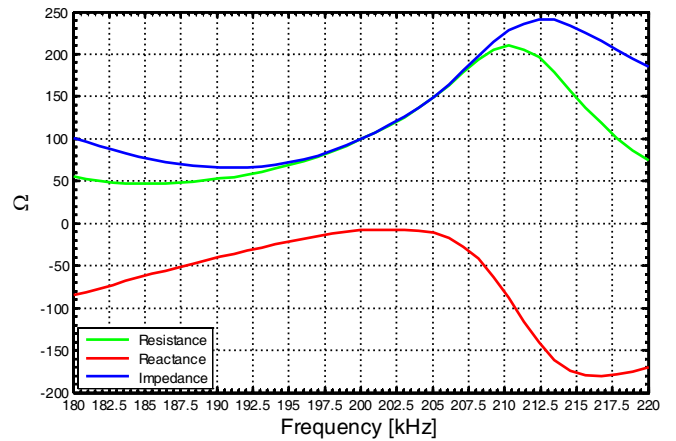
Receiving Sensitivity [dB re 1V/μPa @ 1m]



Transmitting Sensitivity [dB re 1μPa/V @ 1m]

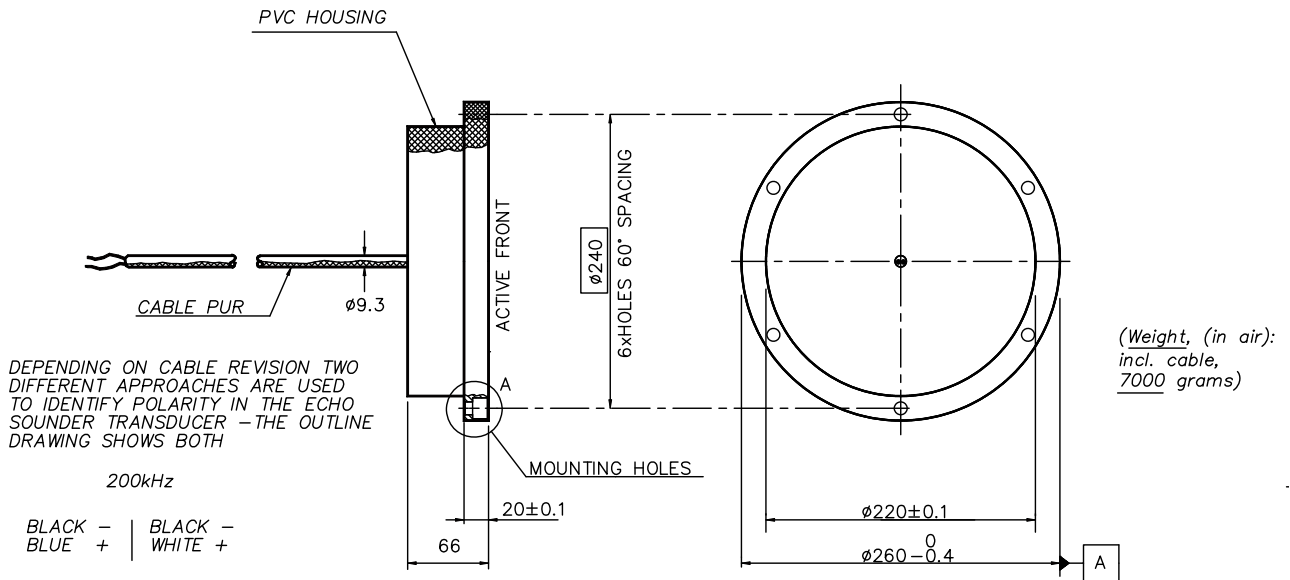


Impedance

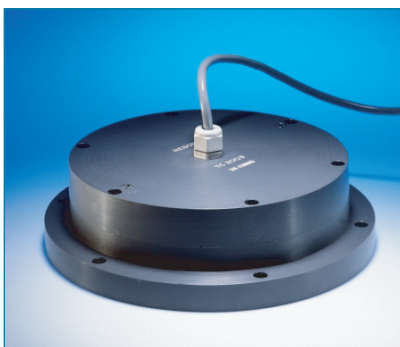
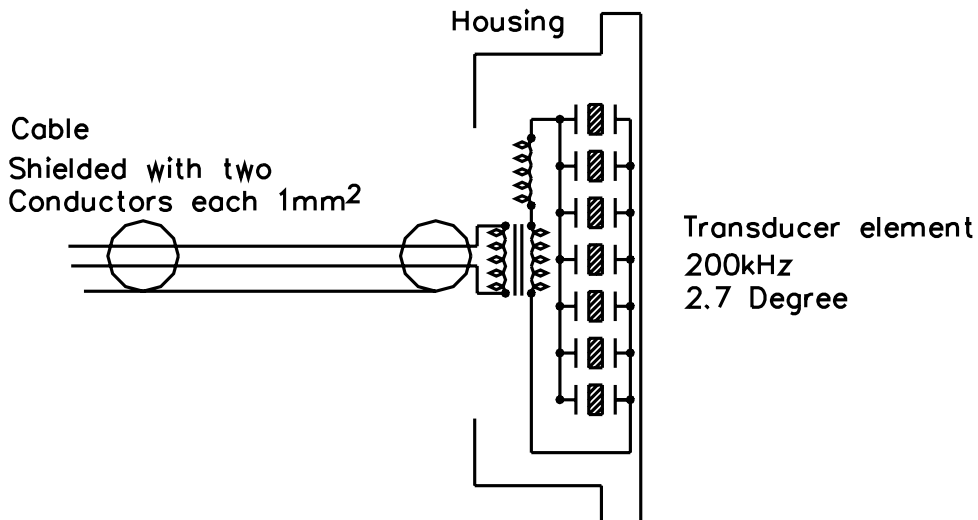


Outline Dimensions

OUTLINE DIMENSIONS



Electric Diagram



RESON reserves the right to change specifications without notice. © 2006 RESON A/S
 For Acoustical Measurement Accuracy please refer to www.reson.com or contact sales.

RESON A/S
 Denmark
 Tel: +45 4738 0022
 E-mail: reson@reson.com

RESON Inc.
 USA
 Tel: +1 805 964-6260
 E-mail: sales@reson.com

RESON Offshore Ltd.
 United Kingdom
 Tel: +44 1224 709 900
 E-mail: sales@reson.co.uk

RESON GmbH
 Germany
 Tel: +49 431 720 7180
 E-mail: reson@reson-gmbh.de

RESON B.V.
 The Netherlands
 Tel: +31 (0) 10 245 1500
 E-mail: info@reson.nl

RESON (Pte.) Ltd.
 Singapore
 Tel: +65 6725 9851
 E-mail: sales@reson.com